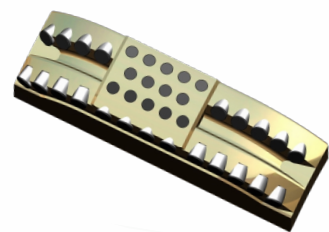


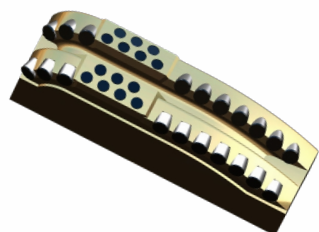


# STILETTO<sup>®</sup> PLUS UNDER REAMER



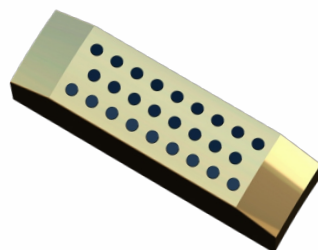
## BLOCK 1

For harder, higher compressive strength  
and/or highly abrasive formation



## BLOCK 2

For softer lower compressive  
strength formations



## BLOCK 3

For stabilization only



# STILETTO<sup>®</sup> PLUS UNDER REAMER

Simple and reliable hole  
enlargement while drilling



Scan with Wechat  
and follow us

 [www.bestebit.com](http://www.bestebit.com)

©2025 BESTE All Rights Reserved Ver01 0225



**Chengdu Best Diamond Bit Co., Ltd. (BESTE)**

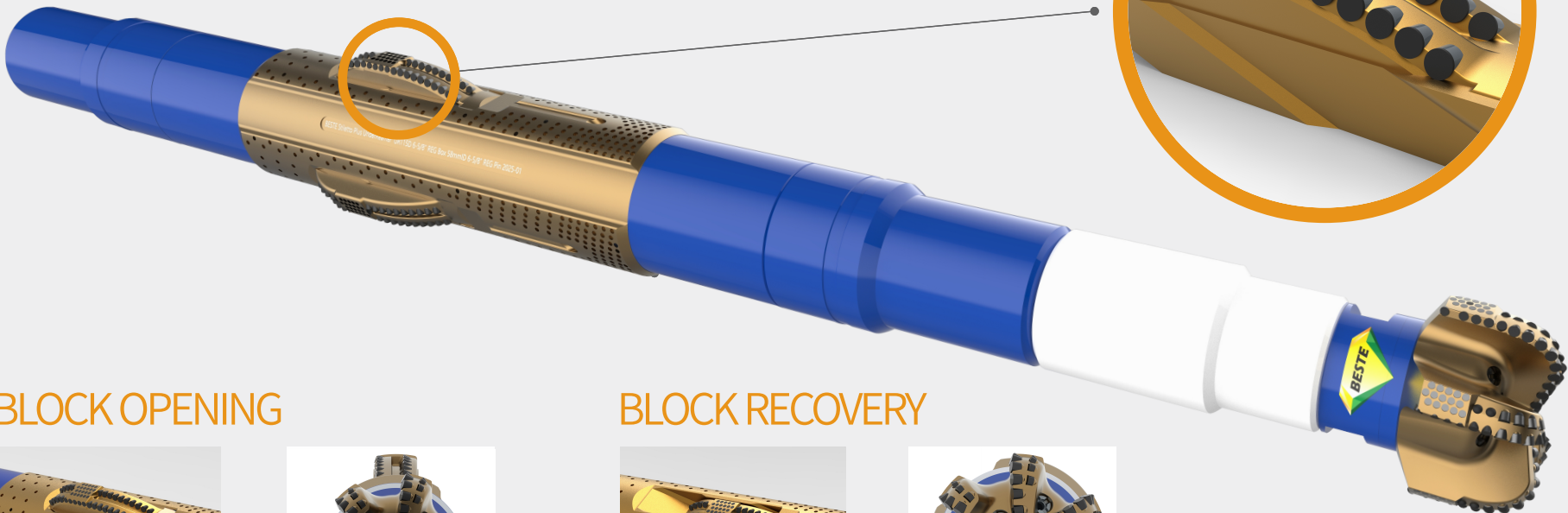
No. 789, Keyuan South 2nd Road  
Hi-Tech. District, Chengdu, China 610041

**Phone:** +86 28 85311882 **Fax:** +86 28 85312155

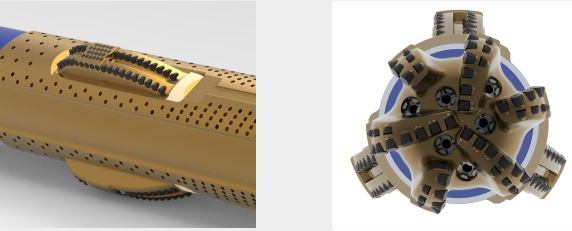


# Stiletto® plus UNDER REAMER

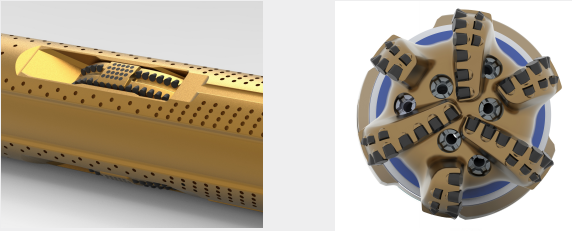
Simple and reliable hole enlargement while drilling



## BLOCK OPENING



## BLOCK RECOVERY



## SPECIFICATION OVERVIEW

General Tool Specifications	UR056	UR061	UR081	UR092	UR100	UR115
Body Diameter	5.75"	6.125"	8.125"	9.25"	10"	11.625"
Min Hole Opening Size	6"	6.375"	8.375"	9.5"	10.375"	12"
Max Hole Opening Size	7.25"	7.625"	10.25"	11.75"	12.75"	14.875"
Pass Through (Pilot) Hole Diameter	5.875"	6.25"	8.25"	9.375"	10.25"	11.875"
Connection Type	NC38	NC38	Nc50	6-5/8"APIReg Nc50	6-5/8"APIReg	6-5/8"APIReg Nc61
Block Type	Hard Formation. Soft Formation. Stabilizer					
Primary Cutter Size	13mm	13mm	13cm	16mm	16mm	16mm
Nozzle Type	RZ	RZ	MZ	MZ	MZ	YZ
Nozzle Count	3	3	3	3	3	3
Makeup Length (mm)	2190	2190	2700	3000	3270	3500
Bore Diameter (mm)	26	26	44	50	50	56
Ball Size (mm)	30	30	48	54	54	62
Aprox Weight (kg)	172	305	650	850	920	1350

## FEATURES

- Suitable for all formations and RSS
- Straightforward single-body FEA-modeled tool design
- Application-specific Trident® plus PDC cutter blocks
- Adjustable jet nozzles with integrated flow paths
- Hydraulic activation through ball drop or controlled pressure drop
- Concentric symmetric mass-balanced design
- Track feed design for securing and deploying cutters
- Bi-directional capability
- Cutter deployment independent of BHA weight formation strength and operating parameters

## ADVANTAGE

- Enlarges hole while drilling in single run
- Ensures smooth engagement for consistent full-gauge wellbore
- Provides high stress tolerance and maximum durability
- Reduces drill string vibration
- Improves drilling efficiency, BHA stabilization
- Promotes full or low flow through BHA
- Enhances hole cleaning
- Optimizes hole opening ratios of up to 25 %
- Promotes operational simplicity, reliability
- Reduces non-productive time (NPT) and costs
- Multiple activation

The Stiletto® Plus Under Reamer provides a simple and reliable solution to the drilling in efficiencies and out-of-gauge wellbores that can increase hole enlargement costs exponentially. Whether enlarging an existing wellbore or reaming-while-drilling new hole, the Stiletto® Plus delivers the utmost in durability regardless of the formation or operating parameters. This versatile tool comprises a single-piece body engineered with Finite Element Analysis(FEA) modeling to ensure a robust low-mass design. This concentric symmetric mass-balanced design provides optimum hole opening ratios up to 25% with increased flows around the tool for enhanced hole cleaning and reduced downhole vibration.

Designed with an exceptional mechanical force advantage the Stiletto® Plus Under Reamer is opened and closed multiple times by two hydraulic activation methods: Ball drop or by way of pre-set jet nozzles where a fully controlled pressure drop activates the tool. Either way, Stiletto® Plus opens completely and consistently, delivering simple dependable and cost-effective hole enlargement in a single run.

Above all a Stiletto® Plus Under Reamer is matched with BesteBit's pacesetting Trident® Plus PDC cutter technology, delivering an application-specific cutter block that enhances drilling efficiency and consistently produces a full-gauge hole from soft to hard and abrasive formations and under the most aggressive drilling parameters. We even configure cutter blocks specifically to cleanout cement in the casing and non-active versions that allows the tool to function as a stabilizer. The Stiletto® Plus Under Reamer is available in a wide range of hole diameters and is compatible with all rotary steerable systems(RSS).

## RECOMMENDED OPERATING PARAMETERS

General Tool Specifications	UR056	UR061	UR081	UR092	UR100	UR115
Max Flow Rate (L/S)	32	32	40	48	70	95
Min Flow Rate (L/S)	13	13	15	18	22	28
Max Operating Pressure ΔP(Mpa)	20.5	20.5	20.5	20.5	20.5	20.5
Min Operating Pressure ΔP(Mpa)	3.5	3.5	4.5	4.5	5.5	5.5
Make Up Torque-Upper (kN.M)	9-12	9-12	37-40	41-47(6-5/8"APIReg 37-40(NC50)	41-47	41-47(6-5/8"APIReg 75-88(NC61)
Make Up Torque-Lower (kN.M)	9-12	9-12	37-40	41-47(6-5/8"APIReg 37-40(NC50)	41-47	41-47(6-5/8"APIReg 75-88(NC61)
Max. Operating Temperature(°C)	177/200	177/200	177/200	177/200	177/200	177/200